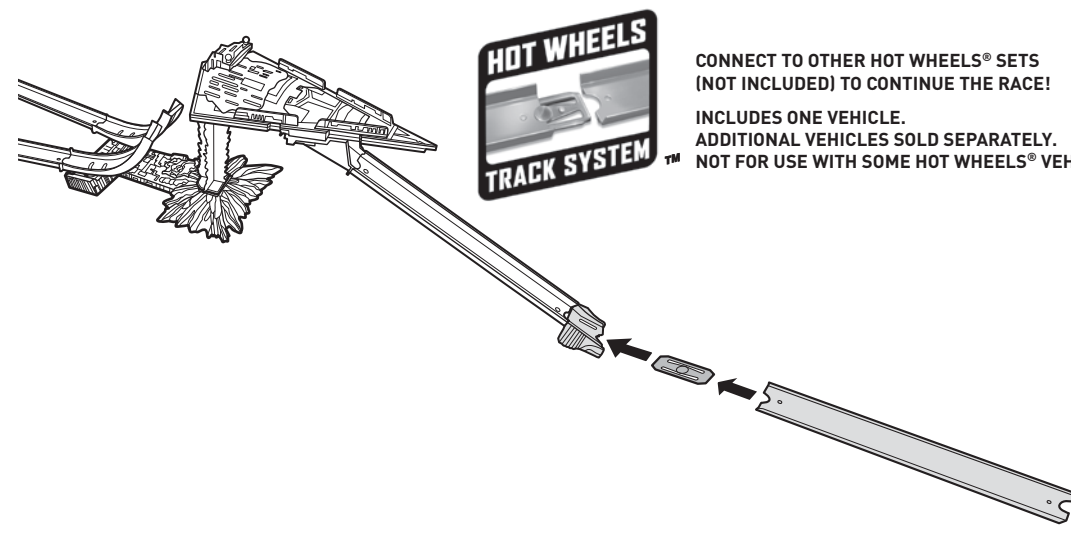
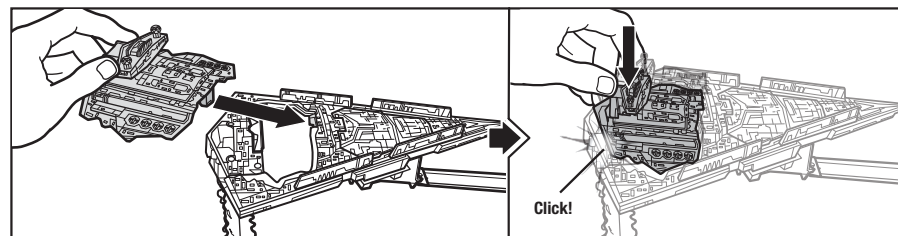




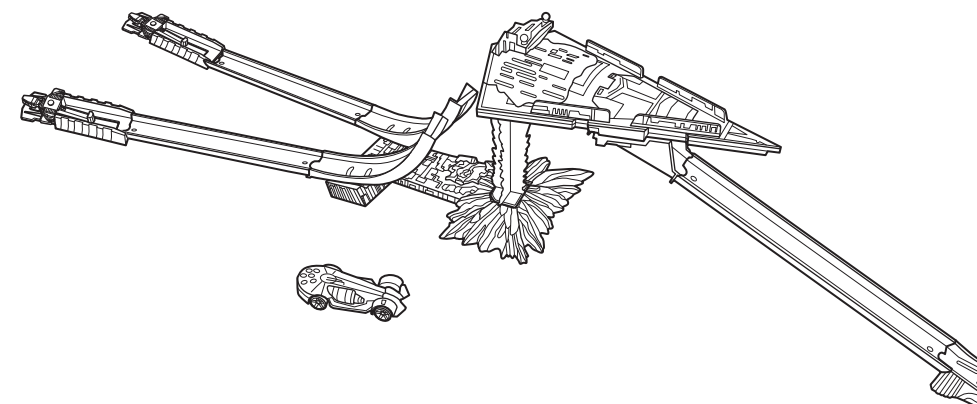
4. RESET STAR DESTROYER™ AND RACE AGAIN!



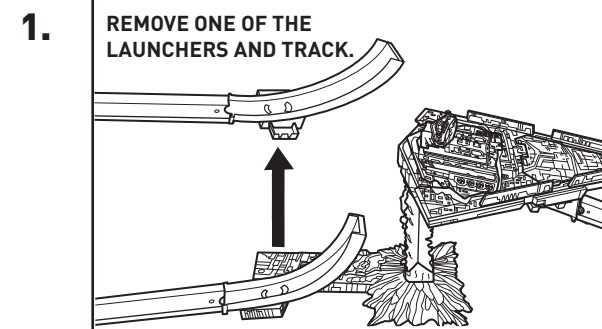
CONNECT TO OTHER HOT WHEELS® SETS (NOT INCLUDED) TO CONTINUE THE RACE!
 INCLUDES ONE VEHICLE.
 ADDITIONAL VEHICLES SOLD SEPARATELY.
 NOT FOR USE WITH SOME HOT WHEELS® VEHICLES.



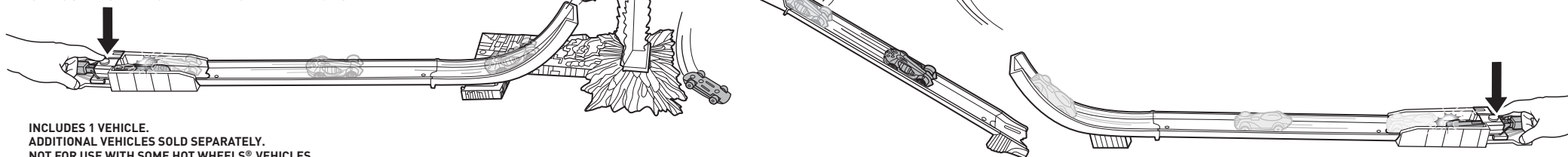
STAR DESTROYER™ DOUBLE JUMP DUEL®



TO PLAY - HEAD TO HEAD RACE



2. SET UP THE LAUNCHER AND TRACK ON THE OPPOSITE SIDE FOR HEAD-TO-HEAD RACES!



INCLUDES 1 VEHICLE.
 ADDITIONAL VEHICLES SOLD SEPARATELY.
 NOT FOR USE WITH SOME HOT WHEELS® VEHICLES.

©2016 Mattel. All Rights Reserved. © and ™ designate U.S. trademarks of Mattel, except as noted. Mattel, Inc., 636 Girard Avenue, East Aurora, NY 14052, U.S.A. Consumer Services 1-800-524-8697. Mattel U.K. Ltd., Vanwall Business Park, Maidenhead SL6 4UB. Helpline 01628 500303. Mattel Australia Pty., Ltd., Richmond, Victoria. 3121. Consumer Advisory Service - 1300 135 312. Mattel East Asia Ltd., Room 503-09, North Tower, World Finance Centre, Harbour City, Tsimshatsui, HK. China. Tel.: (852) 3185-6500. Diimport & Diedarkan Oleh: Mattel Southeast Asia Pte. Ltd., No 19-1, Tower 3 Avenue 7, Bangsar South City, No 8, Jalan Kerinchi, 59200 Kuala Lumpur, Malaysia. Tel: 03-78803817, Fax: 03-78803867.

4+

© & ™ Lucasfilm Ltd.
 service.mattel.com
 Speed through the galaxy at
www.hotwheels.com/starwars

HOTWHEELS.COM



ASST.DPV37
 DPV38-0970
 1100932179-D0M

PLEASE KEEP THESE INSTRUCTIONS FOR FUTURE REFERENCE AS THEY CONTAIN IMPORTANT INFORMATION.

